



REC# : 752854

RECORDED 5/8/2019 AT 1:21 PM BK# 2620 PG# 1896
Debra K. Lee, CLERK OF LARAMIE COUNTY, WY PAGE 1 OF 1

STATE OF WYOMING CORNER RECORD

(In compliance with the CORNER PERPETUATION AND FILING ACT, Wyoming Statutes, 1997 Section 33-29-140, et. seq., and the Rules and Regulations of the Board of Registrations for Professional Engineers and Professional Land Surveyors)

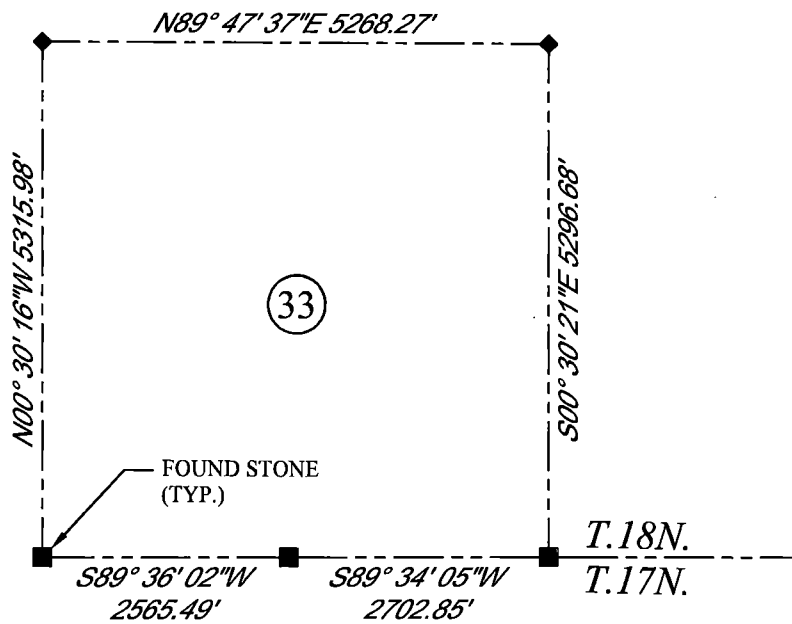
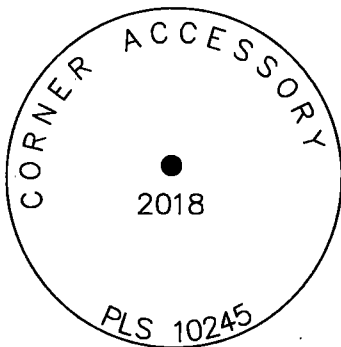
SOUTHWEST CORNER SECTION 33, T. 18 N., R. 63 W., 6TH P.M., LARAMIE COUNTY, WYOMING

GLO: SET A SANDSTONE 18X12X4, 12 IN. DEEP WITH 2 MARKS ON THE WEST AND 4 ON THE EAST EDGES FOR CORNER TO SECTIONS 4, 5, 32, AND 33.

FOUND: FIRM SET SANDSTONE DIRECTLY UNDER BRACE POST IN E-W FENCE LINE, STONE IS SPLIT DOWN THE MIDDLE, POSSIBLE EVIDENCE OF NOTCHES ON W. FACE. CLEAR EVIDENCE OF NOTCHES ON E. FACE. SET ALUMINUM CAP ON NORTH SIDE OF STONE, MARKED AS SHOWN.



SCALE: 1" = 2000'
NORTH DETERMINED BY
G.P.S OBSERVATIONS



LEGEND:

- FOUND BLM CAP
- FOUND USFS CAP
- FOUND STONE
- FOUND PRIVATE MONUMENT
- ◆ CALCULATED POSITION
- ▲ SET MONUMENT (LS10245)
- SECTION LINE

DATE OF FIELD WORK: 10/04/2018 OFFICE REFERENCE: 746049

CROSS INDEX DIAGRAM

	1	2	3	4	5	6	7	8	9	10	11	12	13	14	15	16	17	18	19	20	21	22	23	24	25
A																									
B																									
C																									
D																									
E																									
F																									
G																									
H																									
J																									
K																									
L																									
M																									
N																									
O																									
P																									
Q																									
R																									
S																									
T																									
U																									
V																									
W																									
X																									
Y																									
Z																									

WOOD
2615 AVIATION DRIVE
SHERIDAN, WY 82801
PH: 307-675-6400



THIS CORNER RECORD WAS
PREPARED BY ME OR UNDER
MY DIRECTION AND
SUPERVISION,
SEAL AND SIGNATURE

